

Something New Is Happening:

Berkeley's First All-Campus Climate & Energy Event



Bakar Labs, 2625 Durant Ave
Wednesday, November 12 | 3 – 6 PM
Food provided!

For the first time, Berkeley's climate and energy community — bringing together faculty, researchers, students, advocates, and innovators — comes together in one place.

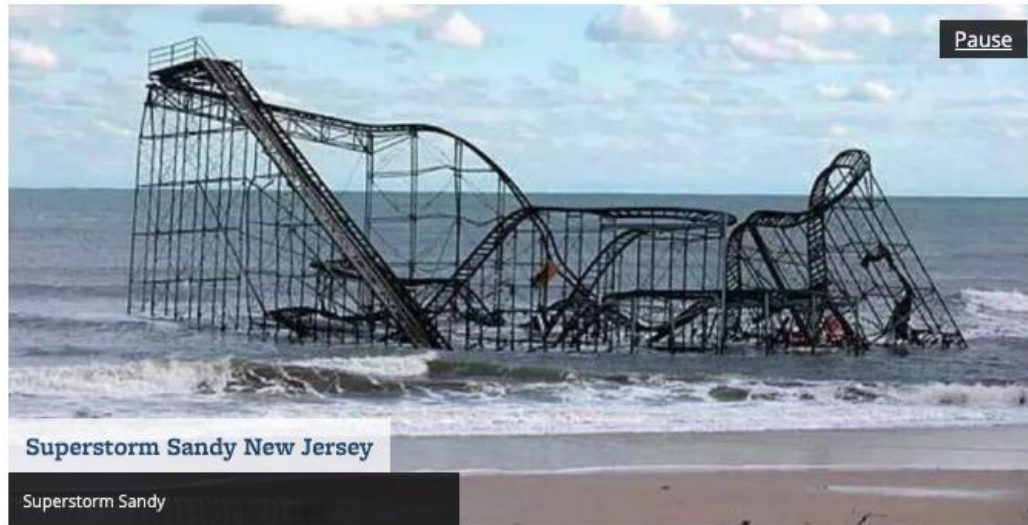
Discover the research, ideas, and people driving Berkeley's leadership on climate.



for Energy
& Materials

Berkeley Climate Change Network

[Home](#) [Faculty and Staff](#) [Students](#) [Off Campus Partners](#) [Media Inquiries](#) [Funders/Investors](#) [BCCN Resources](#) [About](#)



WHY WE DO THIS WORK



NEED HELP? 4 ways to talk to us
Just press button

BCCN is here to serve you. Click your box below to get started.

HELP FOR FACULTY AND STAFF



Faculty and Staff

People - Funding - News - Hot Topics

HELP FOR STUDENTS



Students

Classes - Internships - Jobs - Mentors,

HELP FOR PARTNERS



Off Campus Partners

People - Projects - Advisors



UC Berkeley Sustainability and Carbon Solutions

sustainability.berkeley.edu

UC Berkeley

Berkeley Energy & Resources Collaborative (BERC) is the go-to energy & sustainability club for students across the Berkeley campus

Symposium Conference - Fall (Oct)

Energy Summit - Spring (Feb)

Clean Energy Speaker Series - Fall

Alumni Gala - Spring (Jan)

Happy Hours (Wednesday)

BERC Research

Mentorship Buddy Programs

Climate 101

Climate War Room

BERC Leadership Retreats

Berkeley Innovative Solutions

BERC is a multidisciplinary network of UC Berkeley students, alumni, faculty, and industry professionals. BERC is entirely student-run and spans 11 colleges and 28 departments across UC Berkeley.



Join BERC today!

berc.berkeley.edu



Student Environmental Resource Center (SERC)



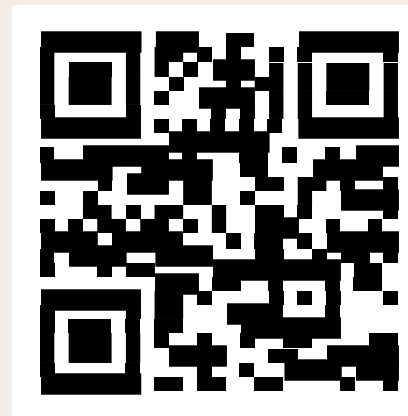
Campus central environmental hub for student engagement, support, and resources



Learn More!



SERC
STUDENT ENVIRONMENTAL
RESOURCE CENTER
UNIVERSITY OF CALIFORNIA BERKELEY



serc.berkeley.edu



[@sercberkeley](https://www.instagram.com/sercberkeley)

ASUC Eco Office (Senator Santos)

Bella Santos is the 13th consecutive ASUC Senator to have been elected on all environmental platforms, commonly referred to as the 'Eco Senator'. This office, known as the 'Eco Office', will represent the interests of the environmental community in the ASUC Senate.

Our departments and projects:

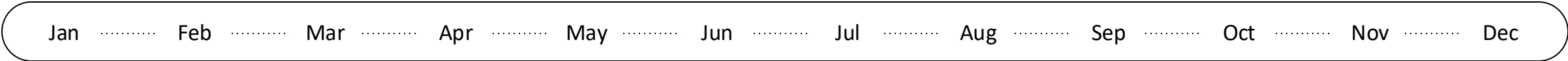
- Legislative Affairs (Green New Deal Resolution)
- External Policy (Make Polluters Pay Policy Advocacy)
- Berkeley Clean Energy Campus
- Reject Rausser / Fossil Fuel Dissociation
- Environmental Justice Education
- And more!!!

@ASUCEcoOffice on Instagram!



Discovery Opportunities Platform

Centralized wayfinding through a database of hands-on opportunities



Started 2023

19,000+

Undergrad Users to-date

368,000+

Searches

Discovery Hubs

Experiential learning through tiered mentorship

6

Research Hubs

29

Graduate Fellow Mentors

143

Undergrad Research Scholars



American Cultures Environmental Justice Initiative (ACEJ Initiative)

The American Cultures Environmental Justice (ACEJ) Initiative seeks to prioritize and formalize environmental justice curriculum centered on the intersections of racial, social, and environmental justice at UC Berkeley. In partnership with the AC Center and SERC's Decolonial Environmental Network, students leaders are working to activate the campus to institutionalize this critical work, link theory to praxis, and foster new spaces for community engagement.

We invite you to join the initiative by joining the advisory board or one of our 5 task forces. There is a place for everyone in this work! Scan the QR code to see how you can contribute/stay in touch.



Learn more/Get Involved!



UC BERKELEY

Climate and Society Center

The UC Berkeley Climate and Society Center (CSC) brings together faculty and students with California climate justice activists and lawmakers, to undertake critical research on specific policies that will support the state's transition to renewable energy with zero-carbon emissions for all communities.

UC Berkeley Climate Journalism Lab



Reinventing climate journalism by tapping the collective brainpower of the world's leading public research university.

Climate journalism is at the heart of Berkeley Journalism's mission.



for Energy
& Materials

Learn more!



**A world-class incubator at UC
Berkeley**

No UC Berkeley affiliation required

Pilot Program:

- Launched in Sept 2024
- 145k sq ft lab space + incubator in 2028
- Currently operating at at BBH, QB3 & RFS
- Student internships available
- Regularly hosting relevant events
- Welcomed 8 companies! (10 by EOY!)





Berkeley Climate Action Proof-of-Concept Program

Fast-track your **climate-focused technologies** into a **product, platform or service** for the marketplace

Projects aimed at new materials and processes, business models, policy, and more

Awards up to **\$100,000 for 12 to 18 months** (based on the proposal's needs and timeline)

UC Berkeley faculty or equivalent titles with PI status are eligible to apply

Learn more at: bakarclimate.berkeley.edu/bcapp
or email: bcapp@berkeley.edu



for Energy
& Materials

Key Dates:

Info session: Early Dec (TBD)
Application Deadline: Jan 15
Review of Applications: Jan-Feb
Finalist Presentations: Feb
Recipients Announced: Mar 2025

STARTUP CAMPUS

How UC Berkeley Became an Unexpected Leader
in Entrepreneurship and Startups



University of California, Berkeley
Innovation and Entrepreneurship Council



Highlights of Berkeley SkyDeck

Learning events & support

- **50-70 workshops** (covering a wide range of topics) **no AI notetakers permitted*
- **Office hours** with top industry execs (150+)
- **Staff check-ins**
- **Stand Ups** to help you stay accountable and focused

Network Expansion

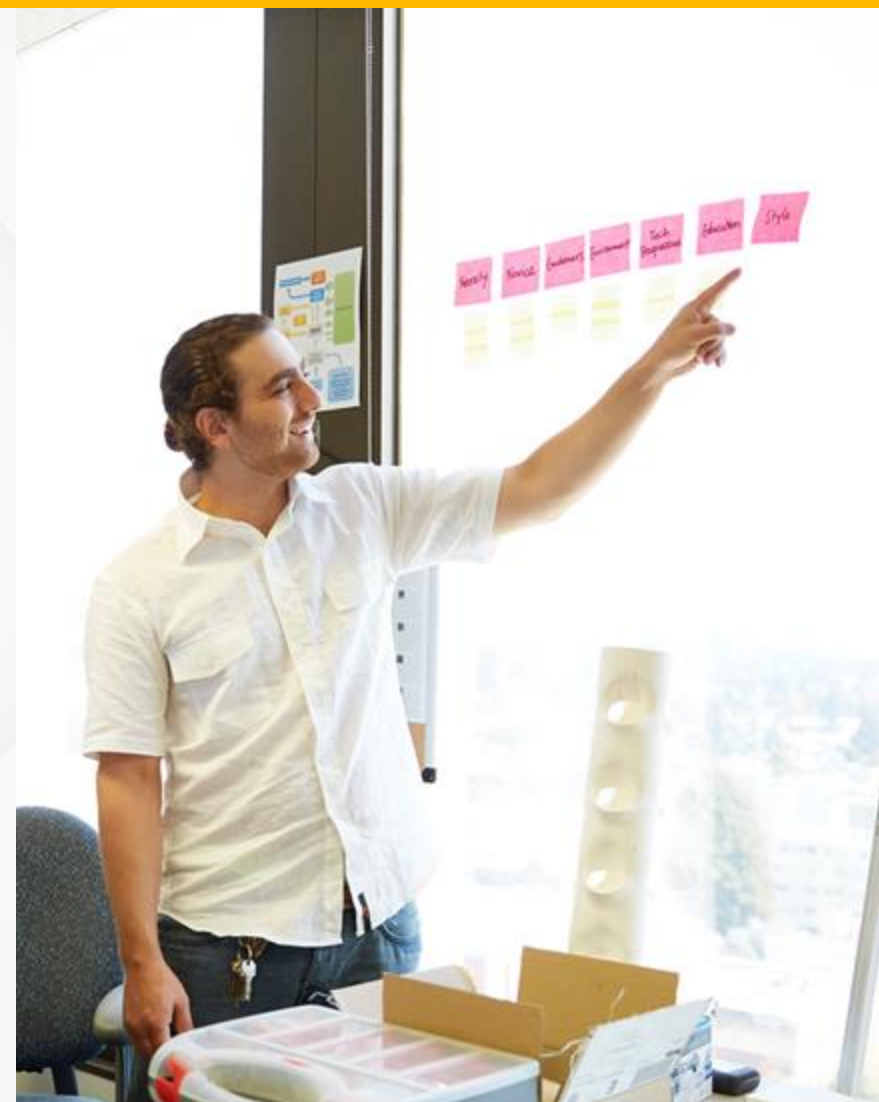
- **Advisor/mentor network** of 900 people (90% Cal alumni, 60% angel investors)
- **Networking events** (meet & greets, socials, etc.)
- **Talent Bridge** (800 students matched to SkyDeck startups a year)

Perks

- **Resource benefits \$750k** (in discounts, credits and benefits)

Fundraising

- **Investor Month** meetings with VCs (avg 50 x 1 on 1 meetings)
- **Demo Day** exposure to 1,000 VCs (largest demo day in the Bay Area)



UC Berkeley Intellectual Property & Industry Research Alliances

IPIRA's peer divisions support UC Berkeley faculty researchers and the entrepreneurial community to enable innovative research relationships and commercialize inventions.

Industry Alliances Office (IAO)

- Industry Sponsored Research
 - Sponsored Research Agreements with industry
 - Collaborations between UC and industry
 - Non-Disclosure Agreements with industry
 - Subcontracts to UC Berkeley PIs on a small business SBIR/STTR grant proposal
 - Receiving research materials or data from an external organization
 - Receiving software for use in research
 - Visiting scientist, industrial fellow, or entrepreneurial fellow agreements
- Advice on industry collaboration policy, practice, and strategy

Office of Technology Licensing (OTL)

- Evaluation of the potential of University Intellectual Property (IP)
 - Reviews disclosures for patentable inventions and copyrightable software
 - Manages IP including: patents, copyrightable materials, software, biological materials, sometimes trademarks
- Developing IP strategy
 - Should we file?
 - Where should we file? (US, International)
 - When and how to market and license
- Negotiating licenses
 - Sending research materials or data to an external organization
 - Sending software to an external organization
- Conducting product research in UC Berkeley laboratories
- Starting a company

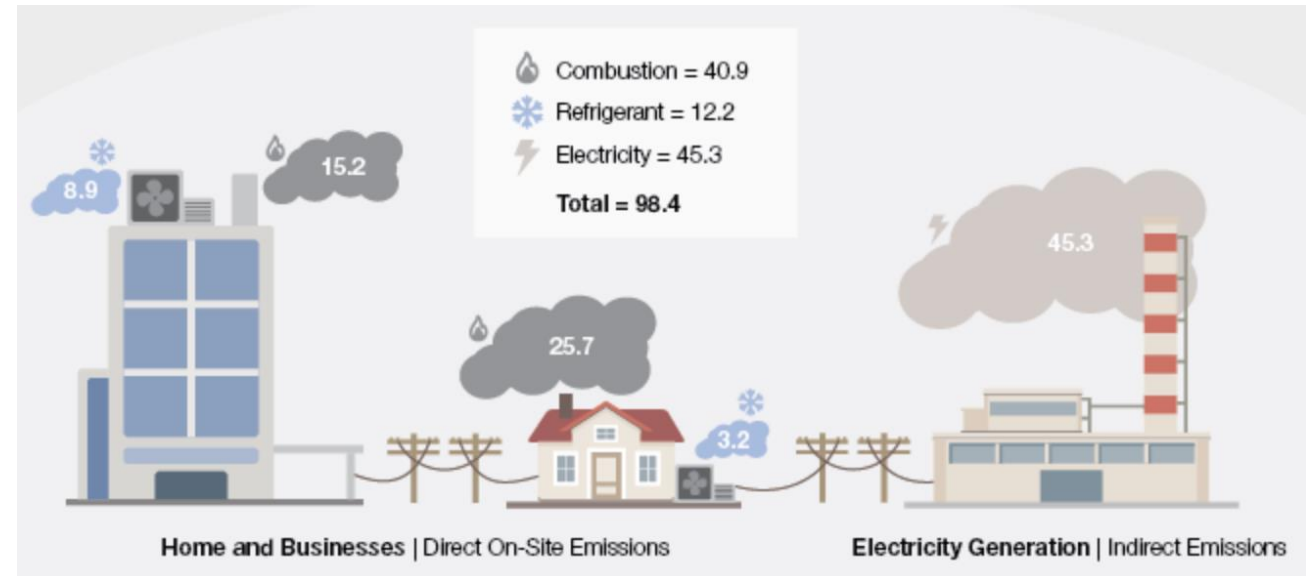
ipira.berkeley.edu

CITRIS Climate initiative



Vision

CITRIS Climate applies information technology to **reduce harmful impacts** from climate change and **build resilience** for a **sustainable, equitable, and carbon-neutral future.**



Energy Institute at Haas



Max Auffhammer



Severin Borenstein



James Bushnell



Duncan Callaway



Lucas Davis



Meredith Fowlie



Kelsey Jack



James Sallee



Joseph Shapiro



Aaron Smith



Reed Walker



Paige Weber

*Helping create a
more
economically
and
environmentally
sustainable
energy future
through research,
teaching and
policy
engagement.*



BerkeleyHaas



Sustainable and Impact Finance

UC Berkeley Haas

Our mission is to cultivating leaders in sustainable and impact finance, empowering them to leverage capital on a global scale to expedite the shift towards a climate-forward and fair economy.

Curriculum

Sustainable & Impact
Finance is a

**HAAS AREA OF
EMPHASIS**

430+

MBA students took the
Impact Investing
introduction course

8 courses

for students on impact
investing and
sustainable finance

We have three graduate student-led investment funds



Industry Speakers

Our events attracted **650+**
attendees



Al Gore
Former Vice President,
Cofounder and chairman
of Generation
Investment Management



Tracy Gray
Founder of the
22 Fund



Zach Knight
Co-Founder of Blue
Forest Conservation



John Podesta
Senior Advisor to the
President for Clean
Energy Innovation and
Implementation



haas.berkeley.edu/saif



sustainablefinance@berkeley.edu



[@haasimpinv.bsky.social](https://twitter.com/haasimpinv)



Cleantech To Market (C2M)

Haas School of Business' premier climate tech accelerator & interdisciplinary graduate course.

Our Mission:



Develop climate tech leaders

By providing hands-on learning experience.



Accelerate climate tech innovation

By helping startups identify viable markets.

What We Do:

C2M pairs climate tech startups with interdisciplinary UC Berkeley graduate teams in a 16-week program focused on commercialization, culminating in a high-profile summit attended by 300+ industry leaders.



haas.berkeley.edu/c2m



c2m@berkeley.edu

2008 **120+** **\$1.3B**

FOUNDED INNOVATIONS RAISED*



UC BERKELEY
SOCIAL SCIENCE
MATRIX

CLIMATE & SOCIETY HIGHLIGHTS

MATRIX RESEARCH TEAMS

Social Science Matrix is an accelerator for early-stage research. Each year, we support a limited number of interdisciplinary groups of students and faculty who explore a novel question or emerging field in the social sciences. Past research teams on climate topics have included:

Commons and Property Research Team

(2025-2026) asks "To what extent do historical, existing and imagined examples of the commons... offer models for sustainable and democratic social ecology in an era of anthropogenic climate change?" *Faculty leads: Matthew Shutzer (History), Chandana Anusha (Geography), Oliver Cussen (Geography)*

Climate Economics Research Team (2019-2020) uses economics to understand the potential impacts of climate change in the U.S. and around the world. *Faculty leads: David Anthoff (Energy and Resources Group), Max Auffhammer (Agricultural and Resource Economics & International Area Studies), and Solomon Hsiang (Goldman School of Public Policy).*

MATRIX EVENTS

Matrix organizes cross-disciplinary conversations on society's immediate and long-term challenges. Each panel features scholars from different disciplines tackling a topical issue.

Financializing Disaster: Insurance & the Climate Crisis (**Thurs., Nov 15th 4pm**) explores how climate change is reshaping housing and insurance markets.

The Future of California Agriculture (Jan 30th, 2025) examined how climate change, labor, and technology are transforming California's agricultural sector.

New Directions in Greening Infrastructure (March 20th, 2024) explored the infrastructure and energy transitions essential to moving beyond fossil fuels.

California Spotlight: The Social and Economic Impacts of Wildfires (April 4th, 2022) focuses on how fires have changed due to fire suppression and climate change after the 2022 fire season.

**REGISTER TO ATTEND AN
UPCOMING EVENT AT MATRIX**



PUBLICATIONS & PODCASTS

The Matrix website features videos of past events, as well as interviews with scholars from diverse disciplines.

How Climate Change Became a Security Emergency: An Interview with Brittany Meché (2022): An interview exploring how climate change migration in the Sahel is framed through security, militarism and colonial power.

Matrix Podcast: A Changing Landscape for Farmers in India with Aarti Sethi and Tanya Matthan (2022): This episode examines how India's farmers are adapting to technological and economic shifts brought by the Green Revolution

**VISIT THE CLIMATE STREAM
ON OUR WEBSITE**



Stay connected with Matrix!
Subscribe to our newsletter for
updates and event announcements.





ANNOUNCING THE...

ECOPERFORMANCE LAB

AT UC BERKELEY

WITH FUNDING FROM THE GREEN INITIATIVE FUND



Are you an....

- Actor, dancer, or singer?
- A musician or visual artist?
- A lighting, costume, or scenic designer?
- A “techie?”
- A director? A producer?
- A storyteller, poet, or playwright?

Email ecoperformance@berkeley.edu

instagram: [epl.berkeley](https://www.instagram.com/epl.berkeley)



Are you interested in....

- Theatre for social and environmental justice?
- “Artivism” in service of the climate cause?
- Street theatre and guerrilla performance art?
- Community outreach and collaboration?

Email ecoperformance@berkeley.edu

instagram: [epl.berkeley](https://www.instagram.com/epl.berkeley)

Ecopoetry & Ecopoetics (English 90)



UC Berkeley

Center for Law, Energy & the Environment

CLEE tackles climate change and other environmental challenges at the local to global scale through the **development and implementation of equitable and effective legal and policy solutions.**

- Student research opportunities
- Law school certificates and journal
- Conferences and webinars



Clean Transportation

Developing innovative policies to advance the transition to zero-emissions mobility.

[Learn more about Clean Transportation](#)



Climate Equity

Promoting clean energy and resilience strategies that serve people and communities.

[Learn more about Climate Equity](#)



Climate Risk and Finance

Investigating the financial implications of climate change and shaping novel strategies to fund investments.

[Learn more about Climate Risk and Finance](#)



Energy Transition

Supporting an effective, efficient, and equitable transition away from fossil fuels.

[Learn more about Energy Transition](#)



International Collaboration

Building coalitions, strategic dialogues, and information-sharing on climate policy around the world.

[Learn more about International Collaboration](#)



Resilient Communities

Crafting land-use and engagement strategies that promote community resilience in a changing climate.

[Learn more about Resilient Communities](#)



Sustainable Water

Addressing foundational challenges across water supply, quality, and systems governance.

[Learn more about Sustainable Water](#)



Emerging Topics

Tackling new questions in a rapidly evolving policy, technological, and physical landscape.

[Learn more about Emerging Topics](#)

clee.berkeley.edu

The background of the slide features a photograph of several wind turbines on a beach. The turbines are white with three blades each, and they are reflected in the calm water in the foreground. The sky is a clear, light blue.

UC Berkeley Goldman School of Public Policy

Center for Environmental Public Policy

The **Center for Environmental Public Policy (CEPP)** at the **Goldman School of Public Policy (GSPP)** takes an integrated approach to solving environmental problems. By synthesizing scientific, economic, technical, social, financial, and political understanding, CEPP collaborates to support the creation and implementation of public policies based on exacting analytical standards that carefully define problems and match them with the most impactful solutions.

CEPP's primary focus is on climate change, the key environmental challenge of our time.

An aerial photograph of a vast solar farm with rows of photovoltaic panels stretching across a landscape. In the background, there are rolling hills and mountains under a sky with a warm sunset glow. A winding road and a small pond are visible in the lower right.

Our mission is to power sustainable economic growth for India and the Global South

through tech-informed policy, capacity building, industry exchange and south-to-south collaboration.



UC Berkeley Goldman School of Public Policy

UC Berkeley Carbon Trading Project

The Berkeley Carbon Trading Project is dedicated to ensuring that carbon markets, in their various forms, support deep and equitable decarbonization.

We do this through:

1. Rigorous study of the effectiveness and quality of carbon offset programs

We are currently focusing on:

Landfill methane Mangrove Restoration Wetland Restoration Refrigerants Forest Management

2. Piloting alternatives to offsetting

In the form of “contributions approaches”

2. Improving transparency and accountability

Through our: Voluntary Registry Offsets Database & Repository of Articles on Offset Quality

4. Engaging with policy makers, market participants, and media

Renewables Policy in the States 2026

Action and inaction in the face of federal retreat

The Spring 2026 course **Public Policy 283: Renewable Energy Policy in the United States** will lead to the creation and public release of a consolidated report on the status of renewable energy policy in states across the country, in light of recent federal efforts to discourage renewable energy development.

Interested in participating? Sign up for PP 283 or contact the instructor Steve Weissman sweissman@berkeley.edu.

UC Berkeley
Goldman School of Public Policy

Briefing Series

Climate Change and Human Mobility

Overview

Disasters' compounding impacts – much of which can be attributed to global climate change – are accelerating risk exposure for all, starting with society's most vulnerable, under-resourced communities and regions. Projected sea level rise, extreme precipitation, drought, flooding, fires, and other hazards paint an increasingly uncertain future for existing communities, infrastructure, and economic investments.

One issue that has been particularly vexing for researchers and policymakers has been the expected increase in the movement of people in response to changing patterns of climate and disaster risks. Discussions on this topic can be challenging given long-term uncertainties on the degree and directionality of climate impacts, together with uncertain projections of demographic change that affect housing, infrastructure, employment, and investment patterns across the state.

Briefing Series

In 2025, the [UC Disaster Resilience Network](#) (UC DRN), [UC Berkeley Institute for Security in Governance](#) (ISG), and the [California Council on Science and Technology](#) (CCST) partnered to deliver a webinar series on Climate Change and Human Mobility. Over the course of four events, leading researchers, policy experts, and practitioners came together to unpack the critical relationship between climate-driven disasters and human mobility—including migration, displacement, and relocation.



Impacts



35% State Government
33% Academia
13% Nonprofit / NGO
19% Other / Did not report

Partnering with the [America Adapts](#) podcast, the conversations were led by creator and host Doug Parsons, leveraging his deep expertise in climate change adaptation and his ability to facilitate engaging and informative discussions. This partnership ensured that the conversations were not only accessible to a broad audience but also delved into the nuanced complexities of climate change and human mobility, drawing out valuable insights from the diverse group of experts.

Crucial Topics. Top Experts.

Panel #1 [Climate Change and Human Migration](#)

Jesse Keenan (Tulane University), **Valerie Mueller** (Arizona State University), and **Daniel Swain** (UC ANR) discussed the big questions about why, how, and where people are moving to in response to changing patterns of exposure to climate and disaster risks, both within California and U.S. borders, and beyond.

Panel #2 [Housing Costs, Insurance Rates, and Rebuilding After Disasters](#)

This panel explored how disasters are affecting the costs of housing, insurance rates, and decisions by communities on whether to move away from at-risk areas. **Sarah Atkinson** (SPUR), **Judson Boomhower** (UC San Diego), **Molly Mowery** (Community Wildfire Planning Center), and **Michael Peterson** (California Department of Insurance) came together to discuss how recent disasters have prompted us to rethink how and where we build, and challenged policymakers to develop strategies to protect assets, minimize costs, reduce community displacement, and prevent future catastrophic losses.

Panel #3 [Climate Change and Human Mobility Across Borders](#)

In the face of the increasing frequency and intensity of climate-accelerated extreme climate and weather events, communities are grappling with the decision to either stay in place and face heightened risk, or to relocate to safer areas. In this discussion, **Hélène Benveniste** (Stanford University), **Joshua Busby** (UT Austin), and **Barbara Walter** (UC San Diego) discussed how the movement of people across borders is inextricably linked to complex legal, social, and policy questions.

Panel #4 [Climate Change, Human Mobility, and Community Resilience in California](#)

The final panel in the series will explore how communities and local and regional governments in California are addressing the growing challenge of climate-induced human mobility. Our panelists will share best practices for building resilience across sectors, including expanding healthcare access for climate migrants, leveraging data systems to anticipate migration patterns and coordinate resources, and developing adaptive infrastructure that balances immediate needs with long-term sustainability.



DOLPHIN
SMART SHIPS

**Re-industrializing the
American Coast through
battery-electric maritime
logistics**

Rausser College of Natural Resources

[About ▼](#) [Academics ▼](#) [Research ▼](#) [Equity & Inclusion](#) [News ▼](#) [Events](#) [Connect with Us](#) [Giving ▼](#)



At Rausser College of Natural Resources, we create solutions that protect Earth's natural resources, ensure economic and ecological sustainability, and improve human health.

Master of Climate Solutions

Unleash your impact: Discover how to empower communities, foster resilience, and cultivate a sustainable future with environmental and climate justice.



What does the future hold for California's Redwoods under climate change?



Coast Redwoods in summer



Giant Sequoia in winter

STOP BY THE:
Integrative Biology Table

Established in 2013, the Berkeley Food Institute (BFI) is an interdisciplinary research, education, and policy institute that works in partnership with communities to advance a just and sustainable food and farm systems. BFI has grown into a network of more than 150 affiliated faculty and staff.

Current climate change initiatives include:

- *CA Farm to School Grant Program Evaluation*
- *CA Organic, Agroecological and Regenerative Agriculture (COAR) Transitions research, policy & education initiative*
- *Agrivoltaics Research Collaborative*

food.berkeley.edu



Beahrs Environmental Leadership Program

Leadership program designed for Impact: a program built from the ground up for environmental and climate professionals seeking to lead systemic change.

Certificate in Sustainable Environmental Management



Our team conducts community-engaged research and outreach to mitigate the impacts of climate change among farmworkers



Moncerrat Hernandez,
UCB
Undergrad



Jimena Romano Silva,
UCB
Undergrad



Quinn Gavin,
recent UCB
MPH
graduate



Fabiola Perez-Lua,
Chancellor's
Postdoc
Fellow
(UCLA)



Dafne Cruz Rodriguez,
recent UCB
graduate



Becca Hernandez,
recent UCSB
graduate



Carly Hyland, Assistant Professor of Cooperative Extension

UC Berkeley School of Public Health, Environmental Health Sciences

UC Agriculture and Natural Resources

chyland@berkeley.edu



CBE

CENTER FOR THE BUILT ENVIRONMENT

Industry/University
Collaborative
Research Center



cbe.berkeley.edu



Indoor Environmental Quality



Energy Efficient HVAC systems



Advanced Envelope Systems



Life Cycle Assessment and
Decarbonization



Tool Development and
Advocacy

Housing + Climate Policy Research Initiative



- Reducing carbon pollution while building new housing



- Equitably retrofitting the existing housing stock



- Supporting housing systems as they face impacts from climate change

Solidarities and Struggles
in the Face of Climate Crisis

THE EQUITABLY RESILIENT CITY

Zachary B. Lamb and
Lawrence J. Vale



Open Access PDF from MIT Press.

**Winner of the 2025 Best Book in
Urban Affairs Award from the Urban
Affairs Association



**CENTER FOR
CITIES+SCHOOLS**
UNIVERSITY OF CALIFORNIA BERKELEY



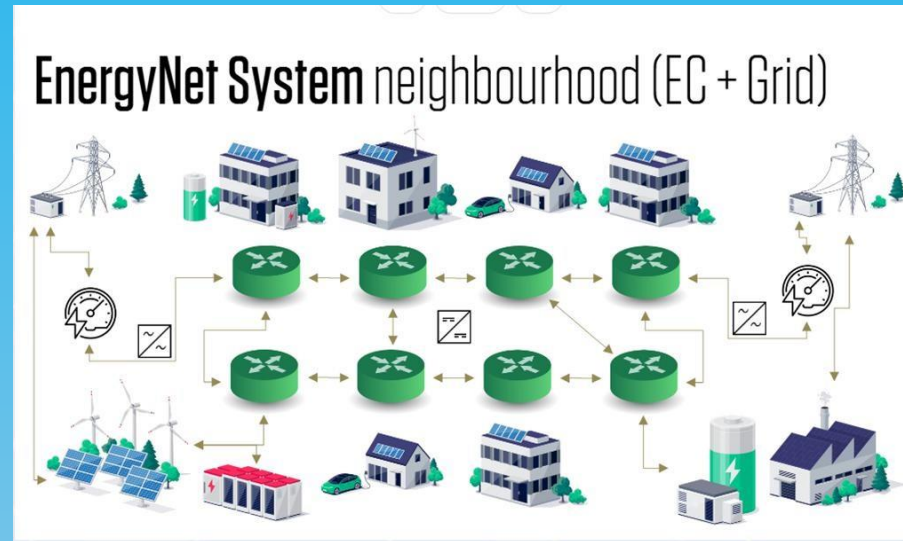
Planning Just and Joyful Cities with and for Young People

citiesandschools.berkeley.edu



Energy Security & Energy Affordability

EnergyNet



***SMART MICROGRIDS ENERGY
DISTRIBUTION SYSTEMS***

The Eric and Wendy Schmidt Center for Data Science & Environment



Improve Wildfire Recovery in National Parks & Beyond

Enabling exploration of future scenarios of climate impacts.



Reduce the Worst Greenhouse Gases

Policy decision support tooling to phase out high-potency GHGs



Scale Sustainable Agriculture

Policy decision support tooling to incentivise sustainable agriculture

Translational Science for Climate Resilience

The Disaster Lab innovates, validates, and disseminates emerging technologies that help support climate resilience



Disaster First Responders

Ex: Calfire, Coast Guard, CALTRANS

Using antiquated technologies and approaches for disaster relief

- Lack programs and pipeline for soliciting innovations or pipeline for request
- Lack training and mindset to source and evaluate new technology

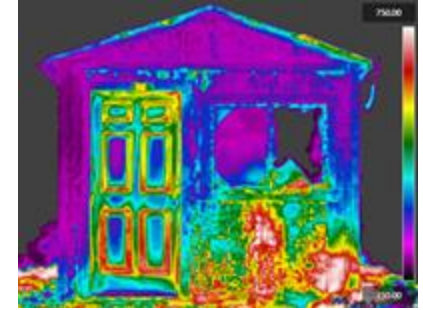
Ex: BP Gulf oil spill



Frontline Communities

Lack of knowledge and resources to adopt innovation

- Frontline communities rarely engaged in the innovation pipeline
- Susceptible to “snake oil” solutions
- Not all can afford emerging technologies

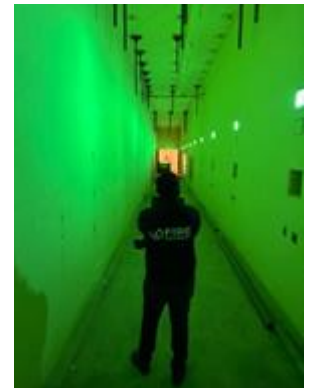


Emerging technology innovators

Technology and lab **innovation is happening in a bubble**

- Limited access to the front line users that they eventually want to partner with
- Unfamiliar with how to build a market-facing operation (vs. being experts at hard science)

Ex: Universities/academia developing Best Available Technology



Climate Investors

Don't invest in space due to **lack of ability to do proper due diligence** of emerging technologies

- New tech is hard to compare to status quo
- Limited quantification of how much is spent now
- Regulatory uncertainty (with government as biggest buyer) impacts risk appetite



IceBerk

Informatics for Climate Empowerment @ Berkeley

We are a multidisciplinary lab at the UC Berkeley School of Information. Our goals are:

To understand the information needs and behaviors of individuals and communities confronting the effects of climate change.

To develop information tools to support their efforts in climate mitigation, adaptation, and biodiversity conservation.

To train the next generation of information leaders for our societal transition to a sustainable and just climate future.



iceberk.berkeley.edu



Mapping atmospheric CO₂ shows Bay Area transportation emissions decreasing at ~1.4%/year!

Building energy emissions stagnant

